

Screenshots of Ozeki NG – SMS Gateway

/ Introduction to Ozeki NG – SMS Gateway /

Author:	Mr. János Aranyász
Creation date:	16. 03. 2007.
Last updated:	16. 03. 2007.
E-mail:	info@ozeki.hu (comments are welcome)
On-line version:	http://www.ozekisms.com/index.php?owpn=307
Copyright:	© 2006-2007, Ozeki Informatics Ltd.

Table of contents

Screenshots of Ozeki NG – SMS Gateway	1
Table of contents	2
Login form.....	3
Management console.....	3
Add service provider connection.....	3
Add user or application	4
Configure GSM Modem.....	4
Message composer	4

Screenshots of Ozeki NG – SMS Gateway

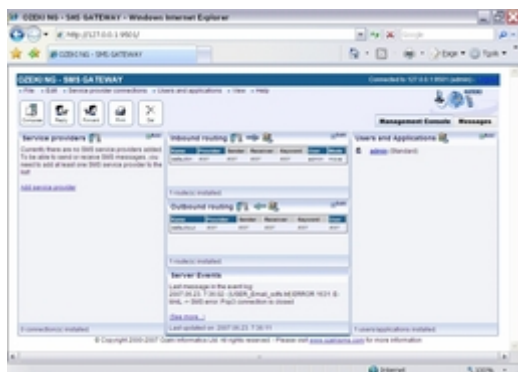
This guide gives you some information about the layout of the Graphical User Interface of Ozeki NG - SMS Gateway. This userinterface can be used on the same computer where the software is installed or over the network using an Internet Explorer or Mozilla Firefox webbrowser



Login form

Login form

When a user wants to use the software or when the system administrator would like to make configuration changes, he should log on with a username and password. After login the management console or the message composer will appear.



Management console

Management console

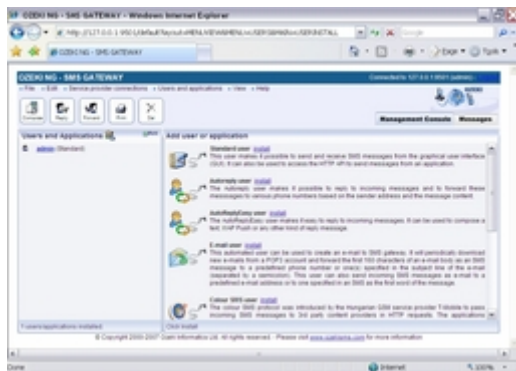
The management console is used by the system administrator to configure service provider connections and users and applications. It also provides an option to configure the routing table for both incoming and outgoing messages.



Add service provider connection

Add service provider connection

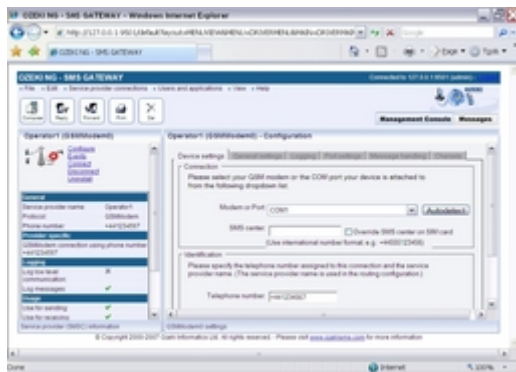
On this form you can add new GSM Modems or IP SMS connections to your system. You have to select the connection type and click on Install. During the installation of a service provider connection you will be prompted for the settings.



Add user or application

Add user or application

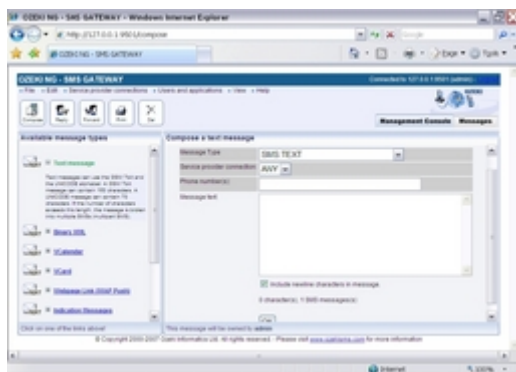
On this form you can add new users or new applications to the system. For example if you want to send messages from your database server (MS SQL, Oracle, MySQL, etc), you should add a database user on this form. After you have added the appropriate user or application, you can configure it.



Configure GSM Modem

Configure GSM Modem

This screenshot shows you the standard configuration form. As you can see, there are tabs with configuration options and the configuration forms uses the standard windows input options.



Message composer

Message composer

The message composer allows you to send various message types to the recipients. It can be used to compose text messages, flash SMS, unicode messages, WAP push and other messages. You can specify the sender address and multiple recipients for every message.